

# MONTHLY MEMBERSHIP PROGRESS REPORT

LOCATION OREGON

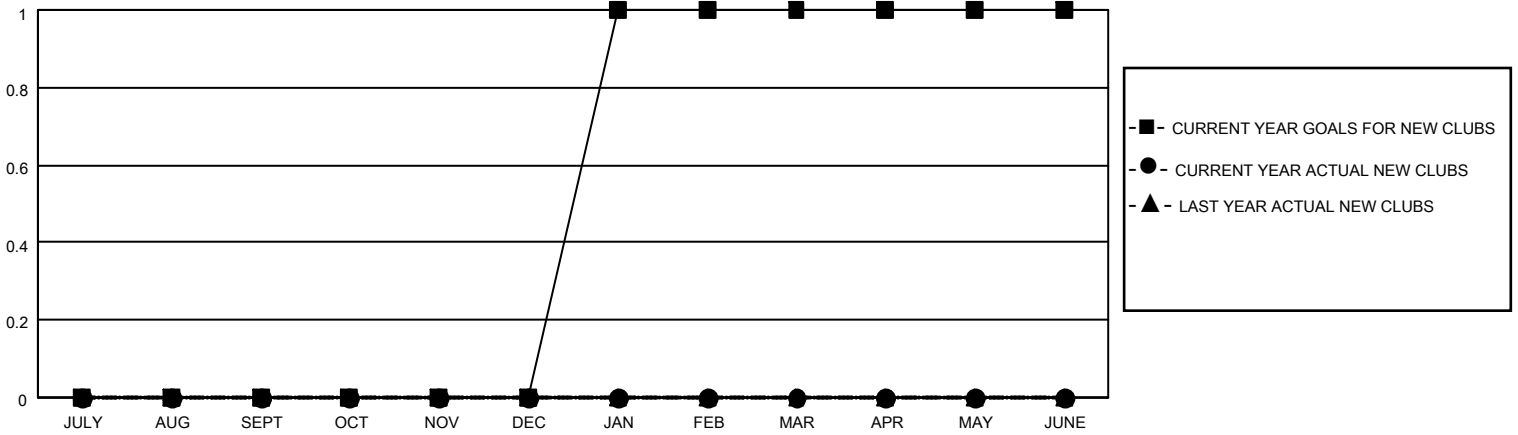
District 36 R

Results as of: 5/31/2021

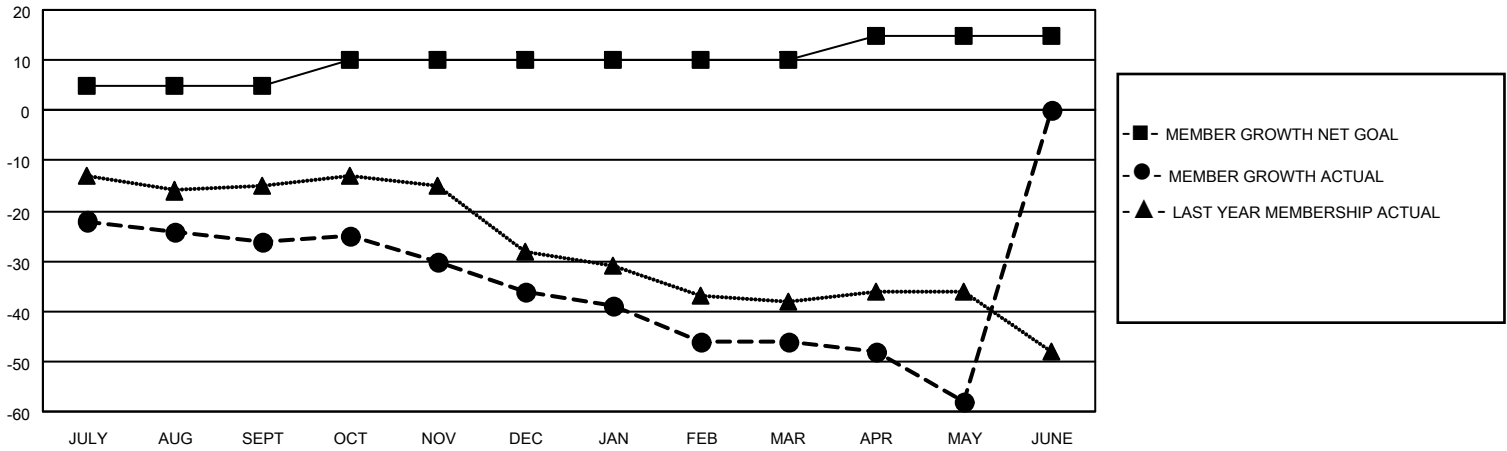
Clubs			
RESULTS FOR 2020-2021			
QUARTER	NEW CLUB GOAL	NEW CLUBS	DROPPED CLUBS
JULY/AUG/SEPT	0	0	1
OCT/NOV/DEC	0	0	0
JAN/FEB/MAR	1	0	1
APR/MAY/JUNE	0	0	0

Members			
RESULTS FOR 2020-2021			
QUARTER	MEMBER GROWTH NET GOAL	MEMBER GROWTH ACTUAL	DROPPED MEMBERS ACTUAL (including transfers)
JULY/AUG/SEPT	5	6	31
OCT/NOV/DEC	5	12	22
JAN/FEB/MAR	0	5	15
APR/MAY/JUNE	5	0	12

**GOALS AND ACTUAL NEW CLUBS CUMULATIVE**



**GOALS AND ACTUAL MEMBERS CUMULATIVE**



DROPPED CLUBS: 2	12 CLUBS OF 34 ADDED 1 OR MORE NEW MEMBERS	<u>GENDER DISTRIBUTION</u>
<u>DROPPED MEMBERS</u>		MALE            414 (60.26%)
DECEASED            13		FEMALE        273 (39.74%)
CLUB CANCELLED      19	<a href="#">CLICK HERE FOR CUMULATIVE MEMBERSHIP DATA</a>	TOTAL FAMILY UNIT MEMBERS            146
OTHER                    48		FAMILY MEMBERS PAYING HALF DUES            74
<b>TOTAL                    80</b>		